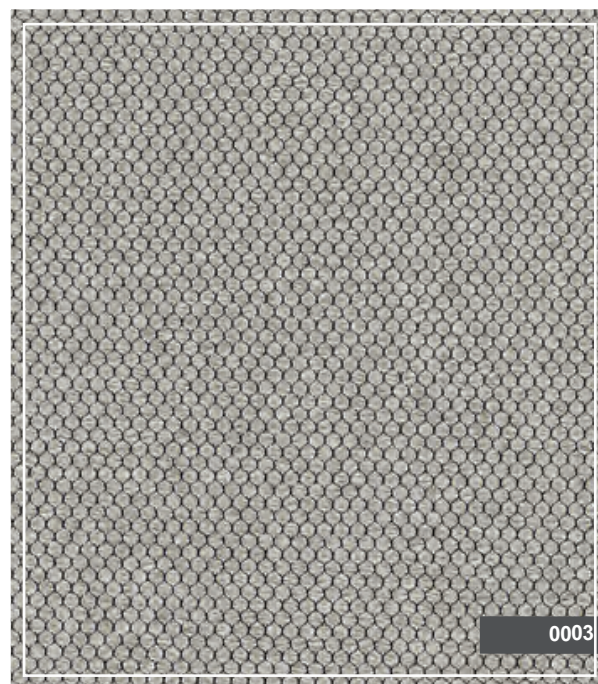
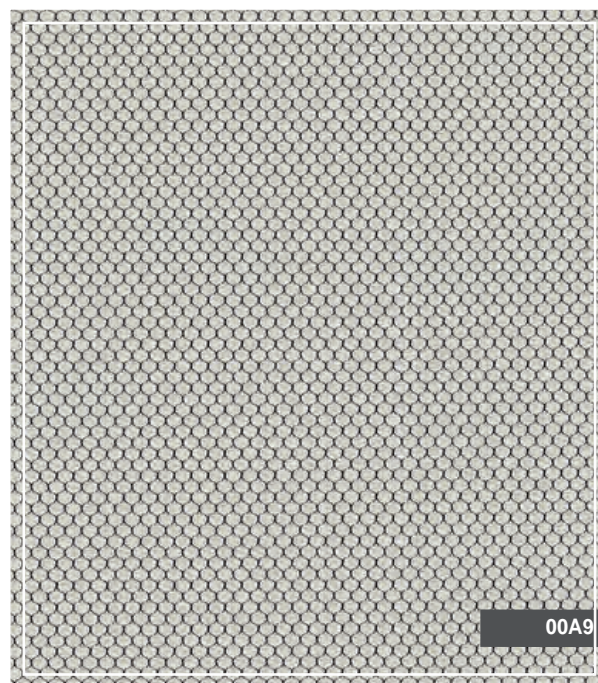
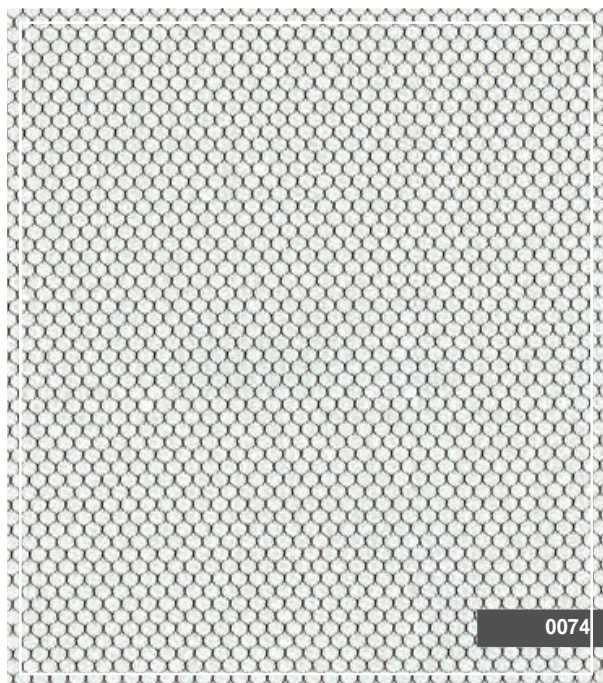
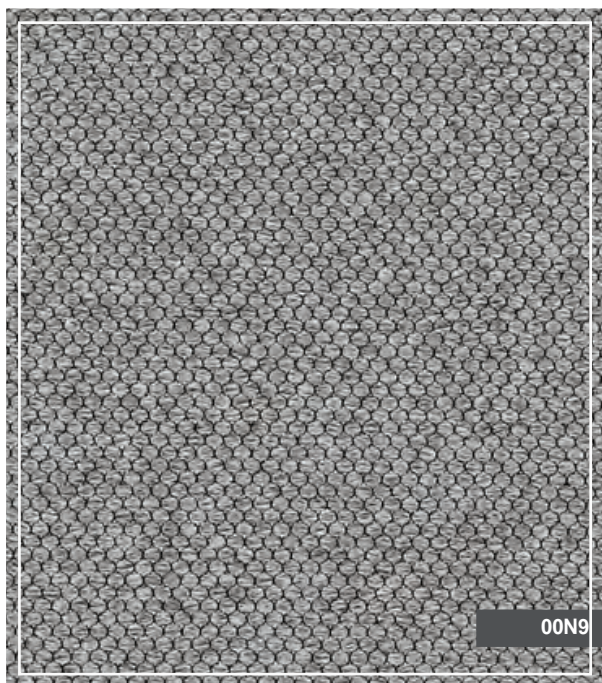


# PEARL Kleurenkaart

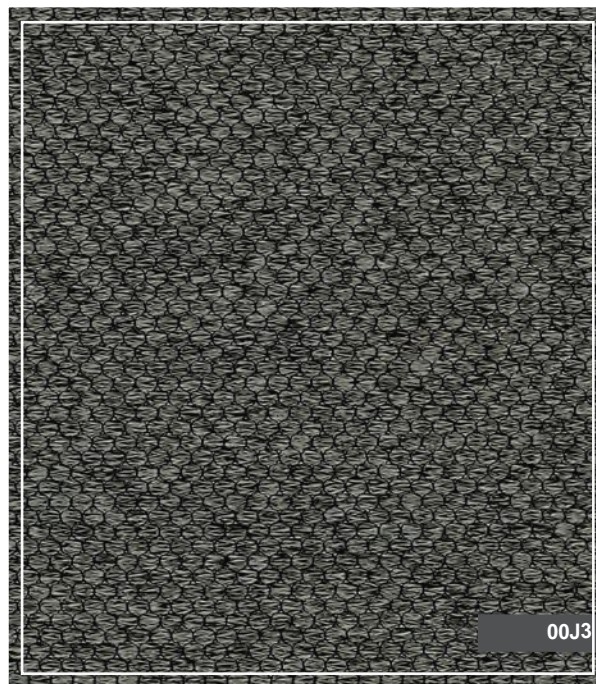
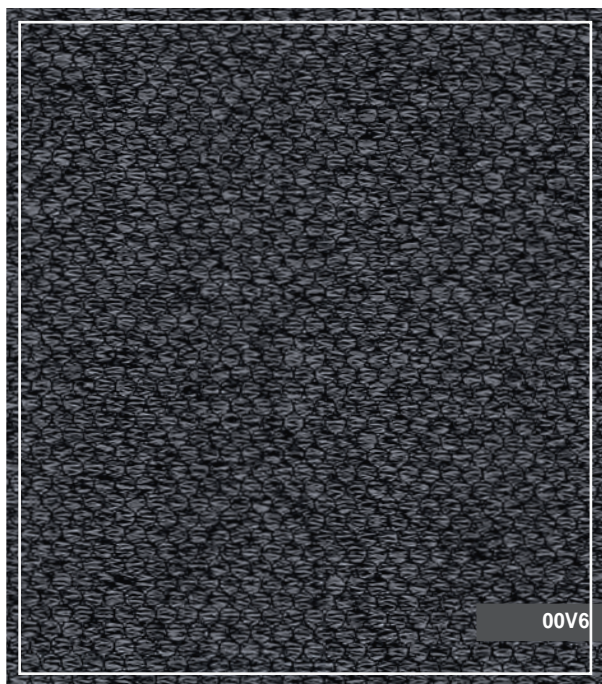
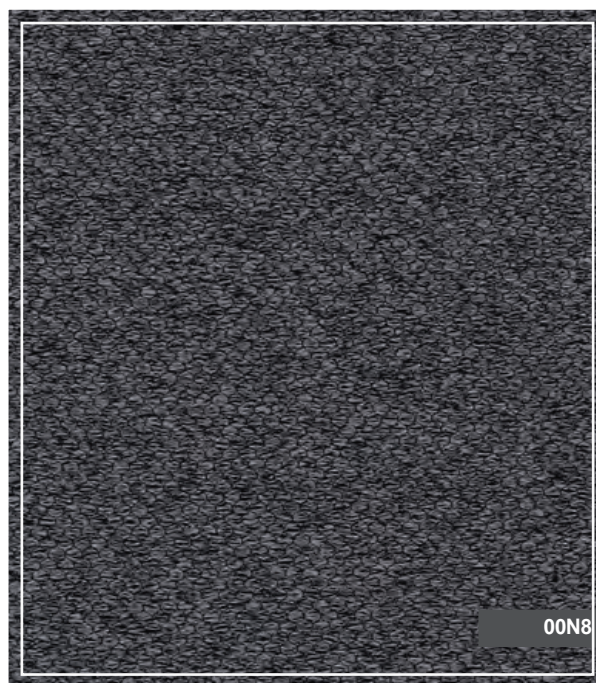
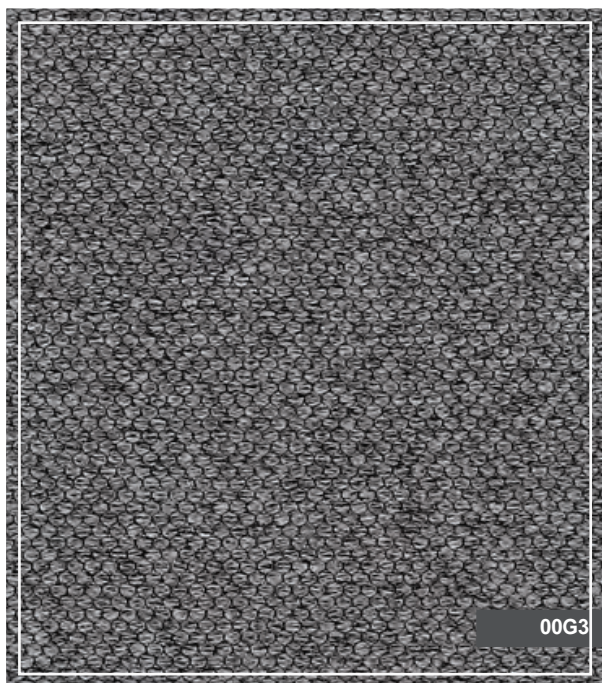


# PEARL

## Kleurenkaart

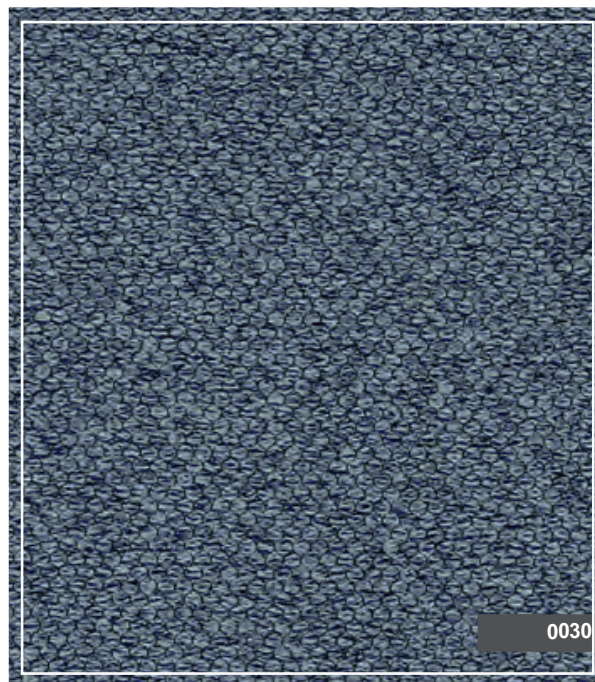
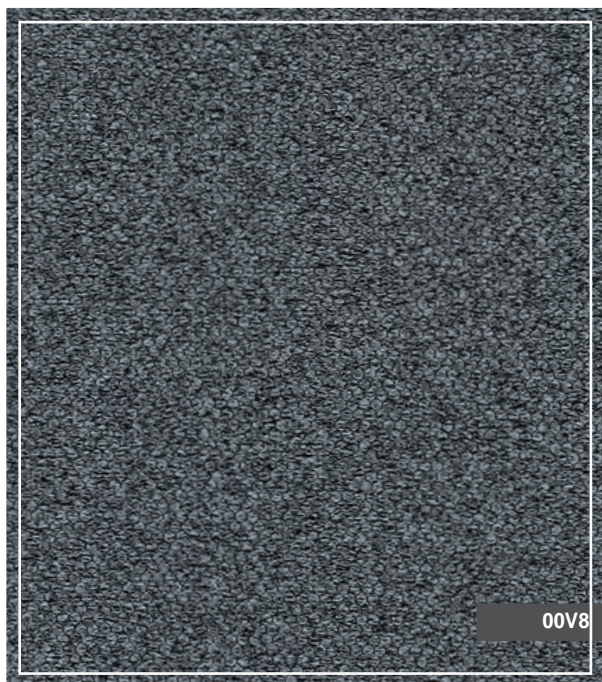
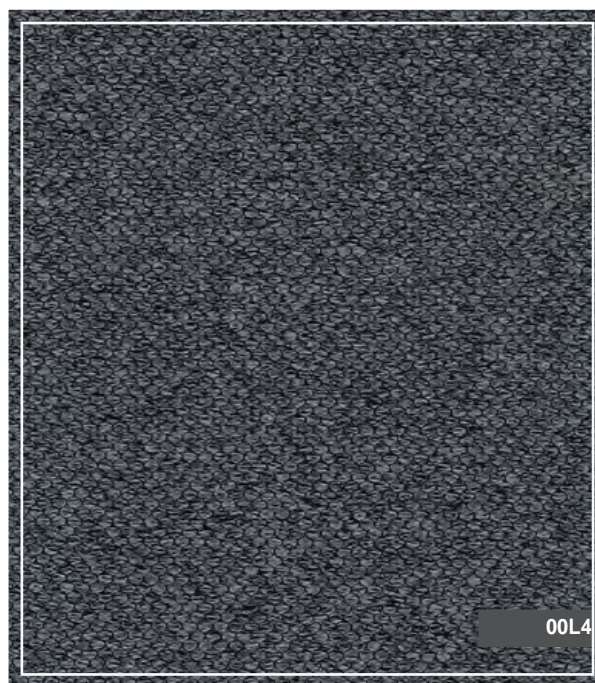
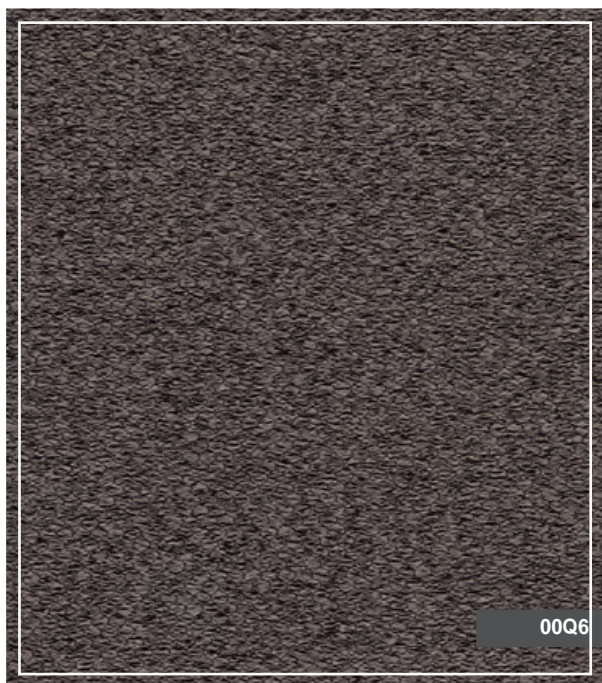


# PEARL Kleurenkaart



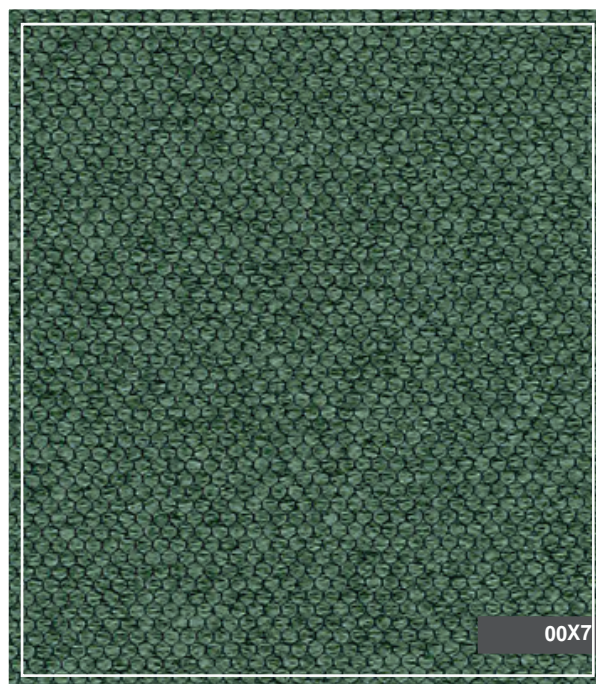
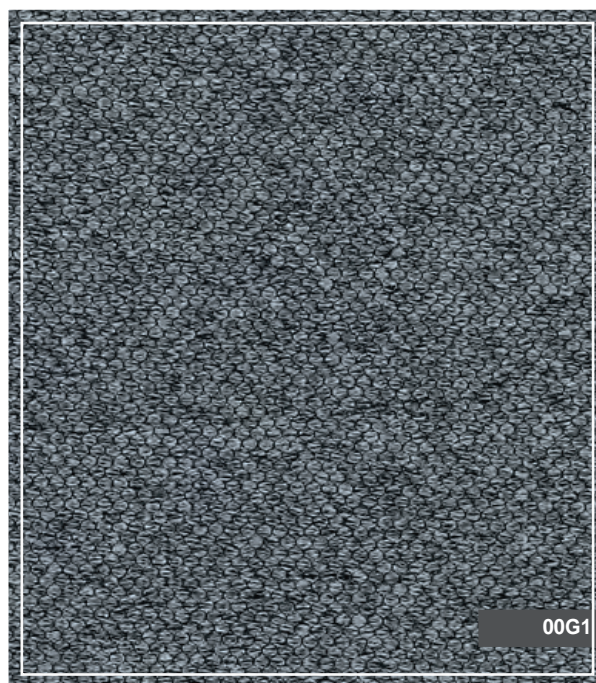
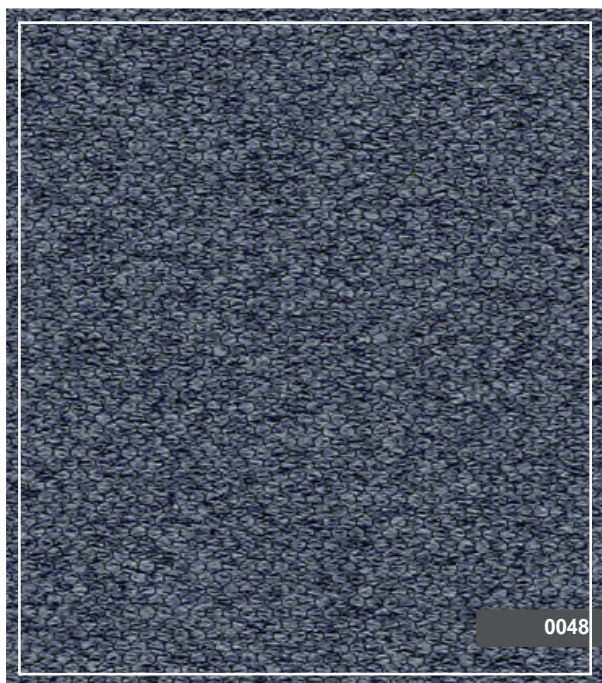
# PEARL

## Kleurenkaart

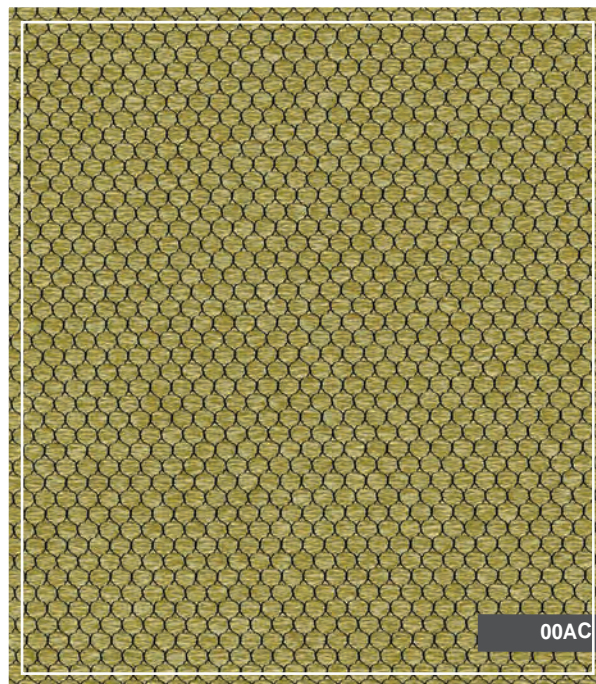
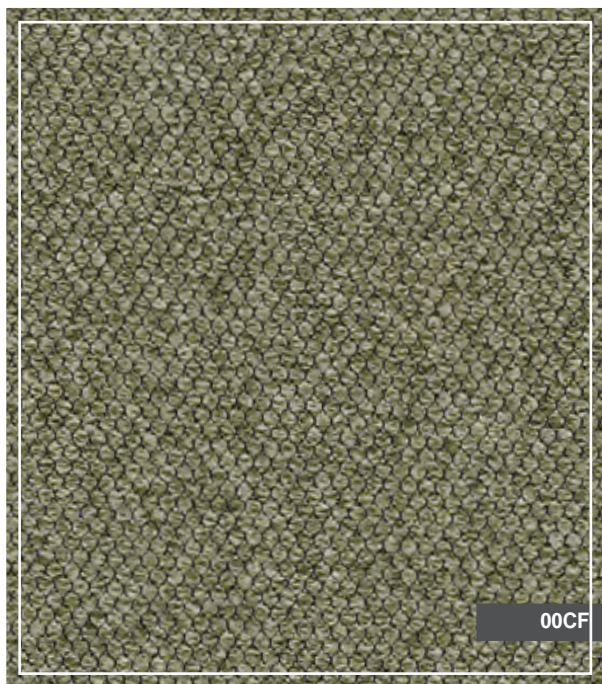
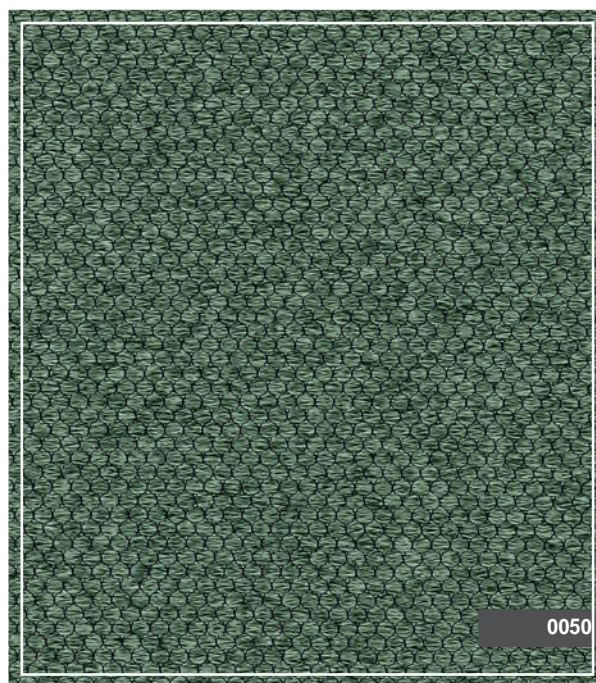
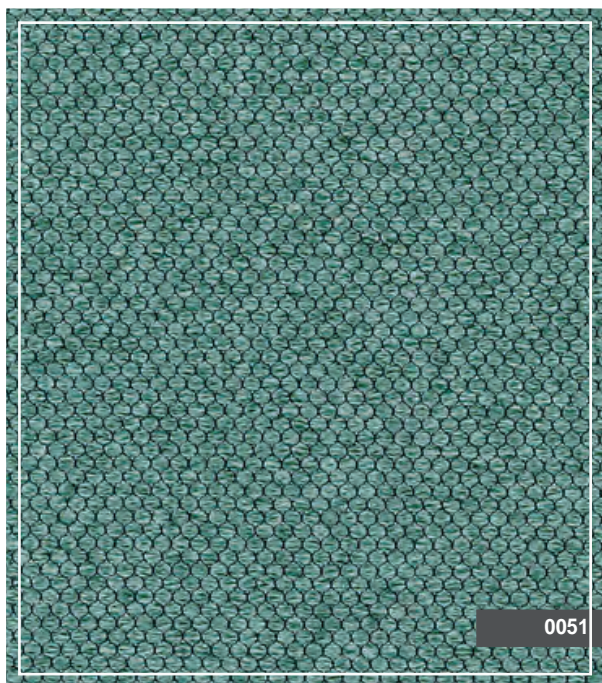


# PEARL

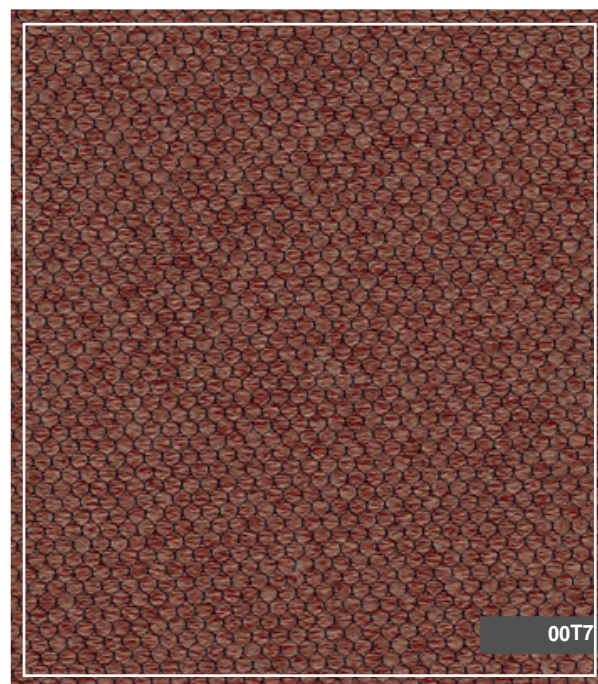
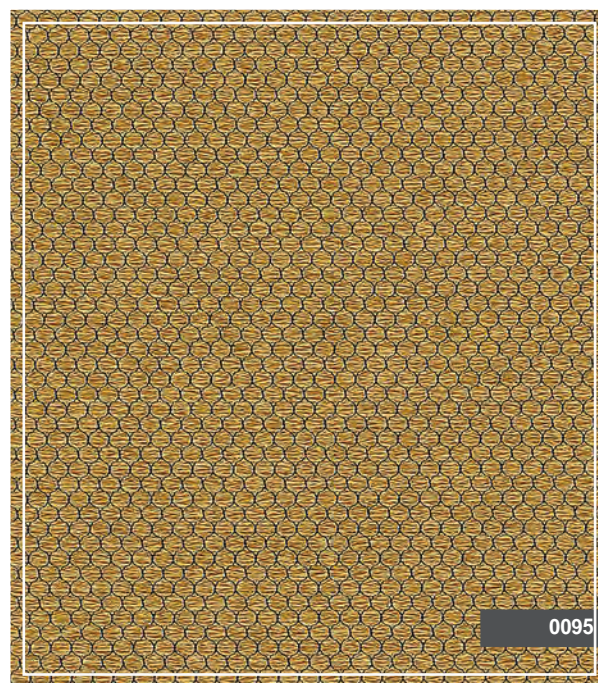
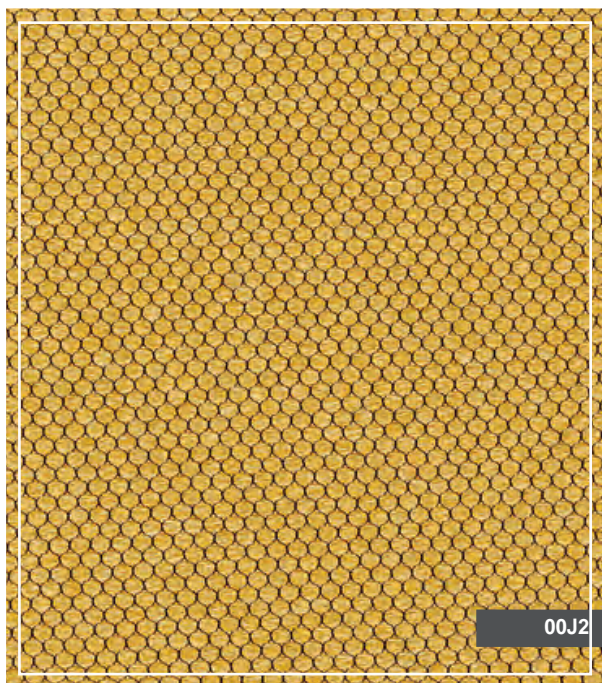
## Kleurenkaart



# PEARL Kleurenkaart

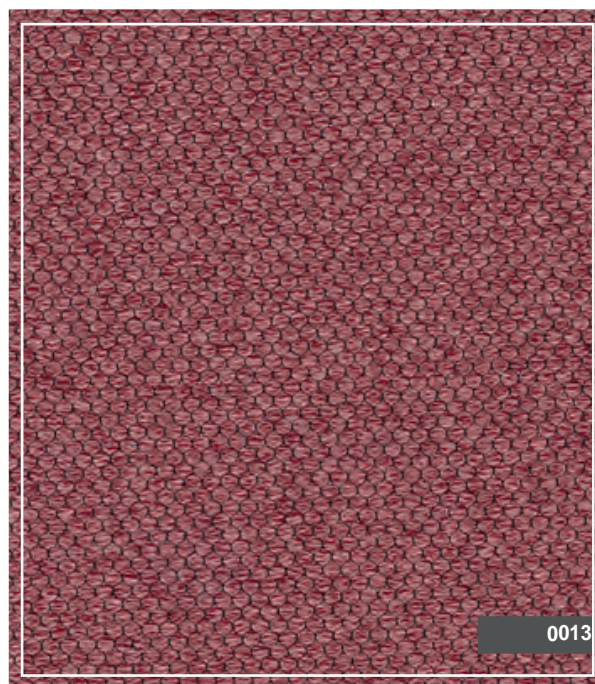
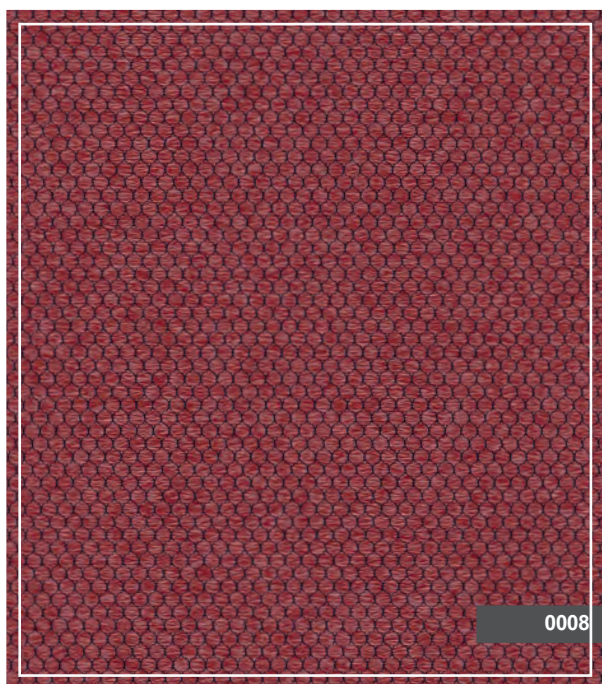
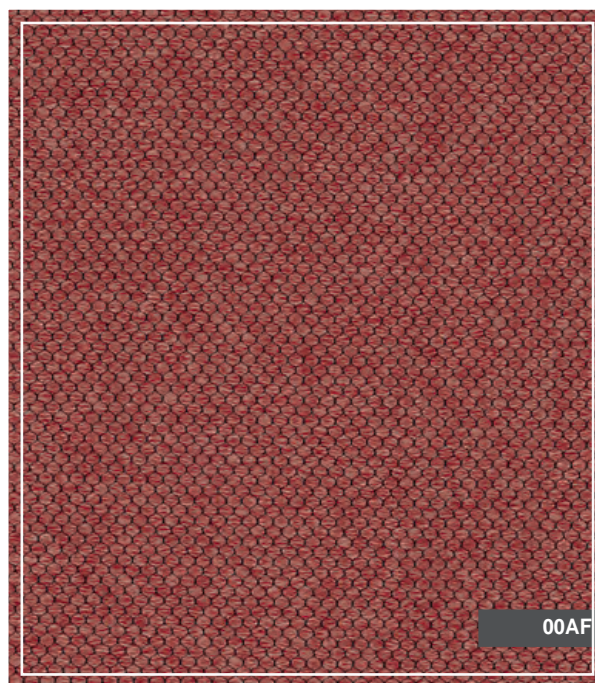
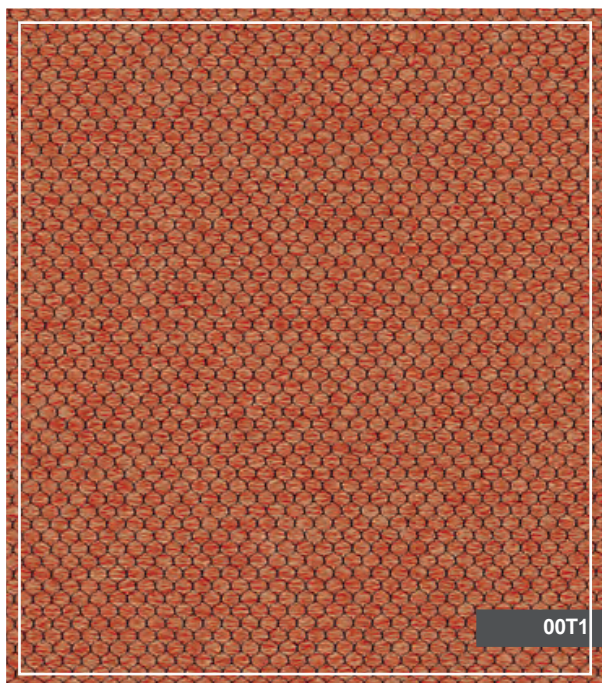


# PEARL Kleurenkaart



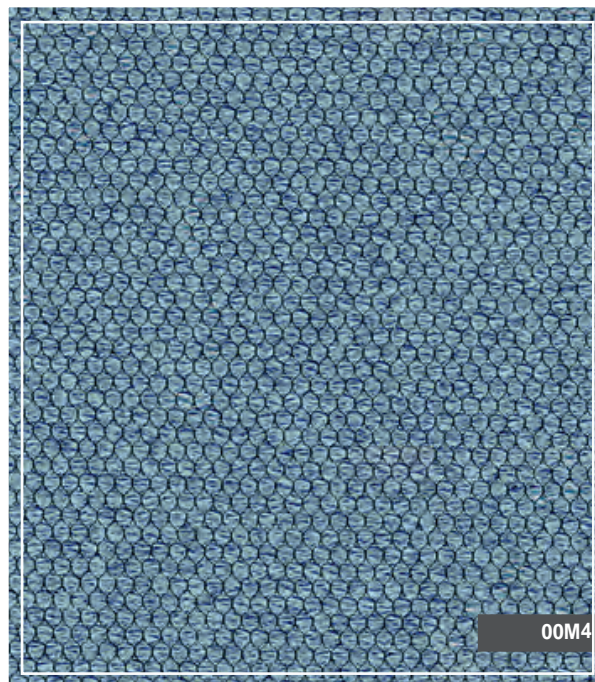
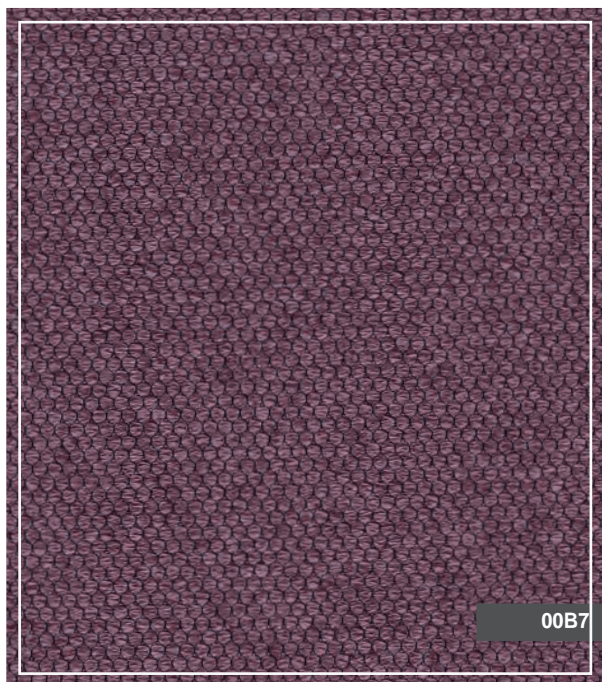
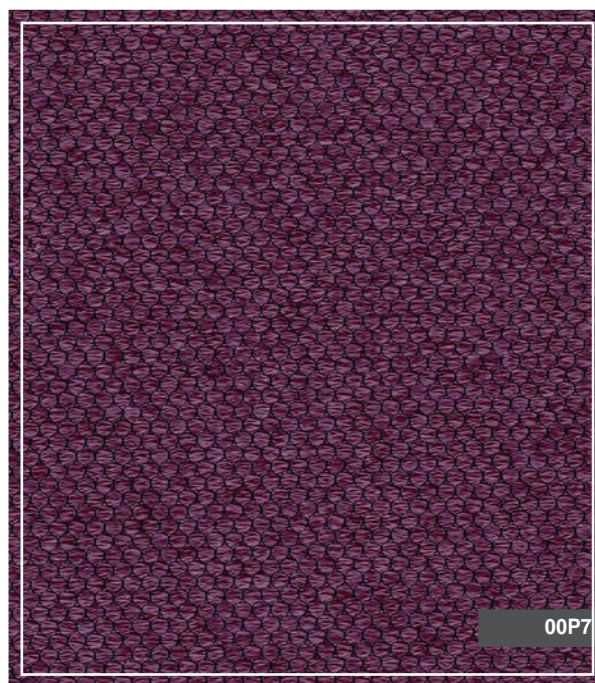
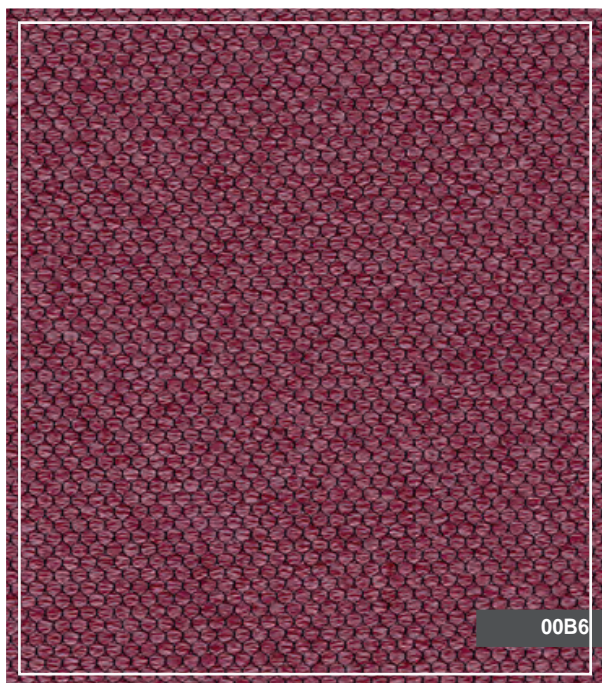
# PEARL

## Kleurenkaart



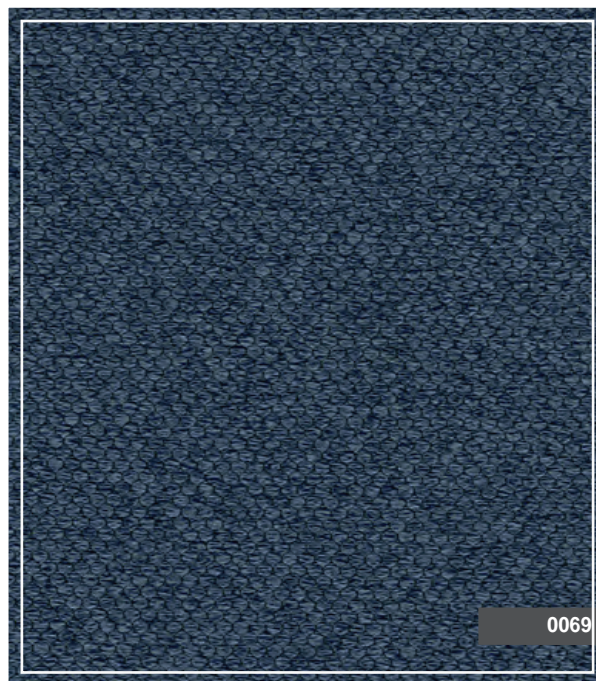
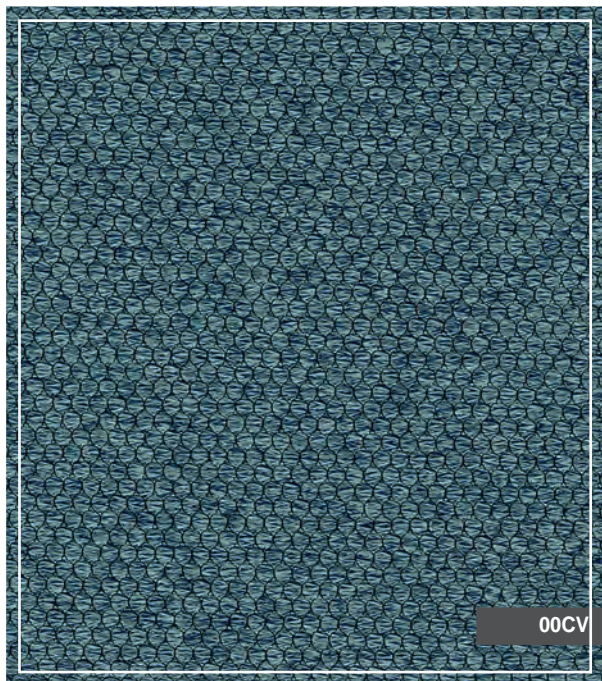


# PEARL Kleurenkaart



# PEARL

## Kleurenkaart



# HUISLIJN

## PRIME COLLECTION PEARL

GENERAL FABRIC INFORMATION					
Quality Name	PRIME-A	Design Name	PRIME PEARL		
End-Use	UPHOLSTERY FABRICS	Width (±2cm)	140 cm (55")	Weight	485 gr/m <sup>2</sup>
Composition	%100 PES	Specials			

PHYSICAL TESTS				
Test	Standarts	Results		
Abrasion End	EN ISO 12947-2	60000		
Wyzenbeek	ASTM D4157	20000		
Martindale-Pilling 2.000 Cycle	EN ISO 12945-2	4/5		
Brush Pilling	D3511-99A			
Test	Standarts	Warp	Weft	
Seam Slippage	EN ISO 13936-2	1.8	1.7	
Tear Strength	EN ISO 13937-3	55	80	
Tensile Strength	EN ISO 13934-1	730	650	
Colour Fastness Rubbing	EN ISO 105-X12(Dry/Wet)	4/5	4/5	
Colour Fastness Light	EN ISO 105-B04			

FLAMMABILITY TESTS		
Test	Standarts	Results
Cigarette Test	BS 5852 PART 1 SOURCE 0	PASS
Match Testi	BS 5852 PART 1 SOURCE 1	PASS
Cigarette Test	EN 1021-1	PASS
Match Testi	EN 1021-2	PASS
Cigarette-Match Test	IMO PART 8	PASS
Cigarette-Match Test	BS 7176 LOW HAZARD	PASS
Cigarette Test	CALL 117	PASS
Cigarette Test	NFPA 260	PASS

REPELLENCY / CLEANABILITY TESTS		
Test	Standarts	Results
Bleach Cleanable Test	AATCC 101-ACT TM1 With Extra Process	PASS

CARE CODES			
Washable	Wash 30°C gentle cycle	Care symbols	
Iron	Low iron at max 110°C		
Tumble dry	Do not tumble dry		
Bleach	Do not bleach		
Dry clean P	Dry-cleaning in perchloroethylene gentle cycle		

Our products fulfil the requirements of Annex XVII of REACH (incl. the use of azo-dyes, heavy metals, etc.) as well as the American requirement regarding total content of lead in children's articles) In stain repellent products, we always use human and environmental friendly C6 fluorocarbons. In FR treatment, we always use DecaBDE free FR compounds. The colours in production might slightly vary from this reference due to different lots in production.



STANDARD  
100  
2106125  
Centexbel



SUSTAINABLE TEXTILES